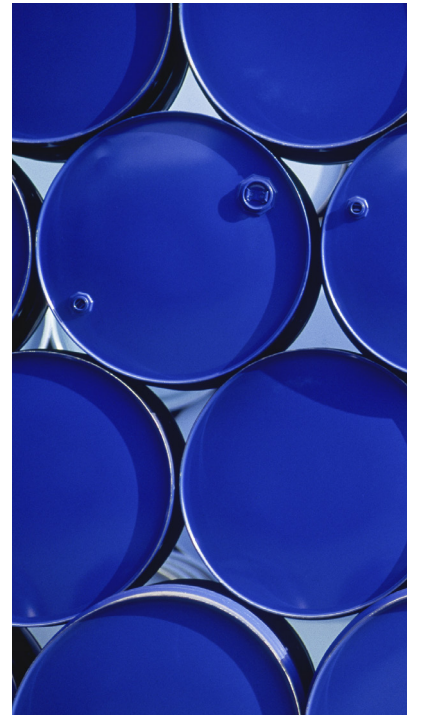




# Corporate Introduction



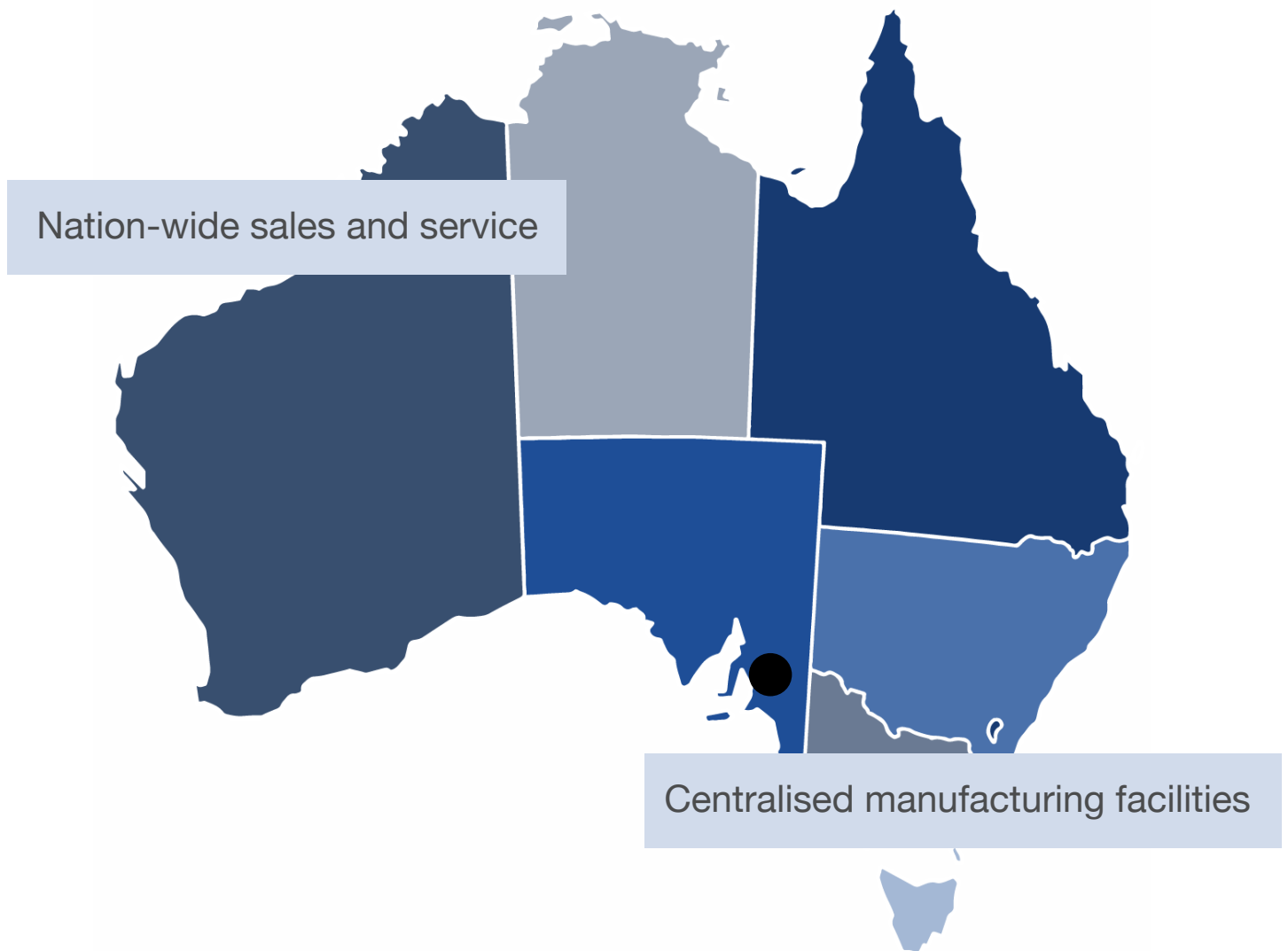
Contents	1
Company Profile	2
Vision	3
Values	4
Sales Activity	5
Quality Statement	6
Facilities	7-8
Specialty Division	9
Laboratory Division	10
Specialty Product Types	11
Laboratory Product Types	12
Business Partners	13-14

# Company Profile

2

Chem-Supply Pty Ltd is a wholly Australian owned company, distributing and manufacturing a comprehensive range of laboratory, specialty and industrial chemicals to all facets of Australian industry.

With seven acres of administrative and manufacturing facilities located in the port precinct in the city of Adelaide, and 60 employees nationally, Chem-Supply has developed a reputation for efficient and high quality service across its Australia-wide distribution network.



Chem-Supply is a key player in the Australian chemical industry, with three major supply functions:

1. Supplying high purity chemicals to the industrial, scientific and educational laboratory markets
2. Acting as an agent and distributor for multiple international and local specialty chemical manufacturers
3. Supplying a broad range of industrial base raw materials, in many pack sizes, to complement the laboratory and agency products and market industry-specific product packages

Since its inception, Chem-Supply's business philosophy has included an unwavering commitment to provide high quality products and services to its customers. As a tangible measure of this resolve, Chem-Supply is certified to AS/NZS ISO 9001:2008.

Chem-Supply's efficient manufacturing and distribution, commitment to quality, and ongoing business strategy have resulted in significant and solid growth. For five consecutive years, Chem-Supply was featured in the national Business Review Weekly's Top 100 Fastest Growing Private Companies in South Australia.

## The vision behind our success as a trusted Australian company

Chem-Supply holds a special position in the Australian market, defined by its unique ability to service a customer's needs for both their production and laboratory requirements.

Our goal is to be a valued and respected supply partner of niche specialty production chemicals, and to become the largest supplier of laboratory reagents in Australia.

We have a clear purpose – to deliver a standard of excellence in all that we do. To achieve this, we are committed to building a disciplined and supportive culture, with a business etiquette that encourages and empowers every member of staff.

Our business philosophy is to develop exceptional customer relationships, which are underpinned by our non-negotiable core values of respect, integrity and trust.

Mutual respect is essential to the fabric that is Chem-Supply. It must be embraced within our company, as well as demonstrated to our clients and principals. Our people should impart loyalty, professionalism and integrity, with an attitude that is both responsible and positive.

All of these values have a foundation in trust. It is our belief the ultimate compliment our customers can give us is their trust.

Chem-Supply has a strong sense of community. We therefore feel compelled to help those less fortunate than ourselves. Accordingly, we direct a percentage of our earnings to support sustainable aid programs and charities.

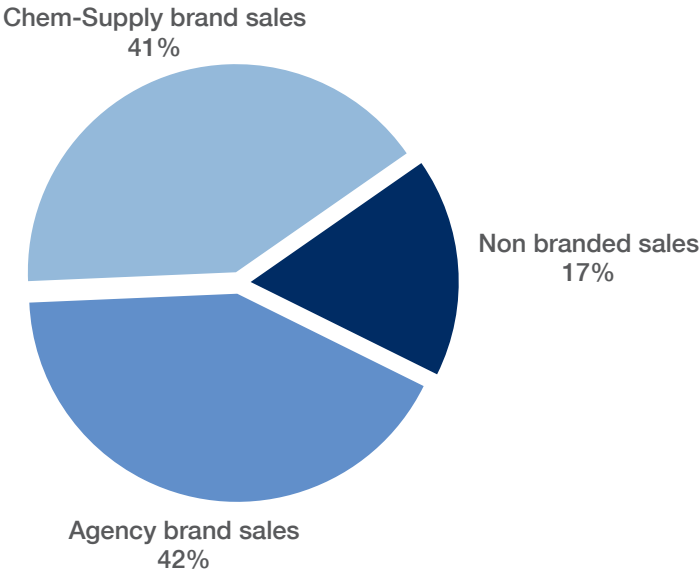
Geoff Goss, Director



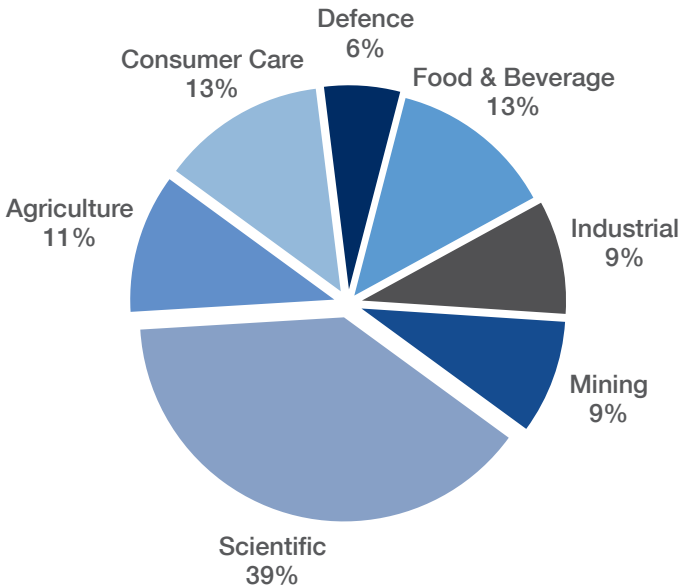
Our company's values lead to your competitive advantage



Sales Breakdown  
by Type



Sales Breakdown  
by Industry



## Chem-Supply takes quality seriously

We know the quality of our chemicals and services impacts your day-to-day productivity, so we are committed to delivering high quality, every day. We don't stop there either; we're also striving for continuous improvement to respond to your changing needs.

That's why our customers throughout the world have confidence when dealing with Chem-Supply. Our commitment to quality promotes your success.

### Your satisfaction is so important to us that we've established a Quality Management System to attain it

In pursuit of continuous improvement to all aspects of our operations, and to ensure we meet our customers' requirements, Chem-Supply developed a Quality Management System. This System is certified to the international standard ISO 9001:2008.

### Access our Safety Data Sheets to promote safety and efficiency in the workplace

Our Safety Data Sheets are written in accordance with the Globally Harmonised System of Classification and Labelling of Chemicals (GHS), as implemented in Australia, and continuously reviewed to ensure compliance with current legislation. Safety data sheets for Chem-Supply products can be downloaded 24/7 from [www.chemsupply.com.au](http://www.chemsupply.com.au).

### Know exactly what you're getting with our up-to-date Product Specifications

Due to the continuous review and improvement of our products and occasional changes in raw material availability, our Product Specifications are subject to change without notice. You can access up-to-date Specification Sheets anytime from [www.chemsupply.com.au](http://www.chemsupply.com.au).

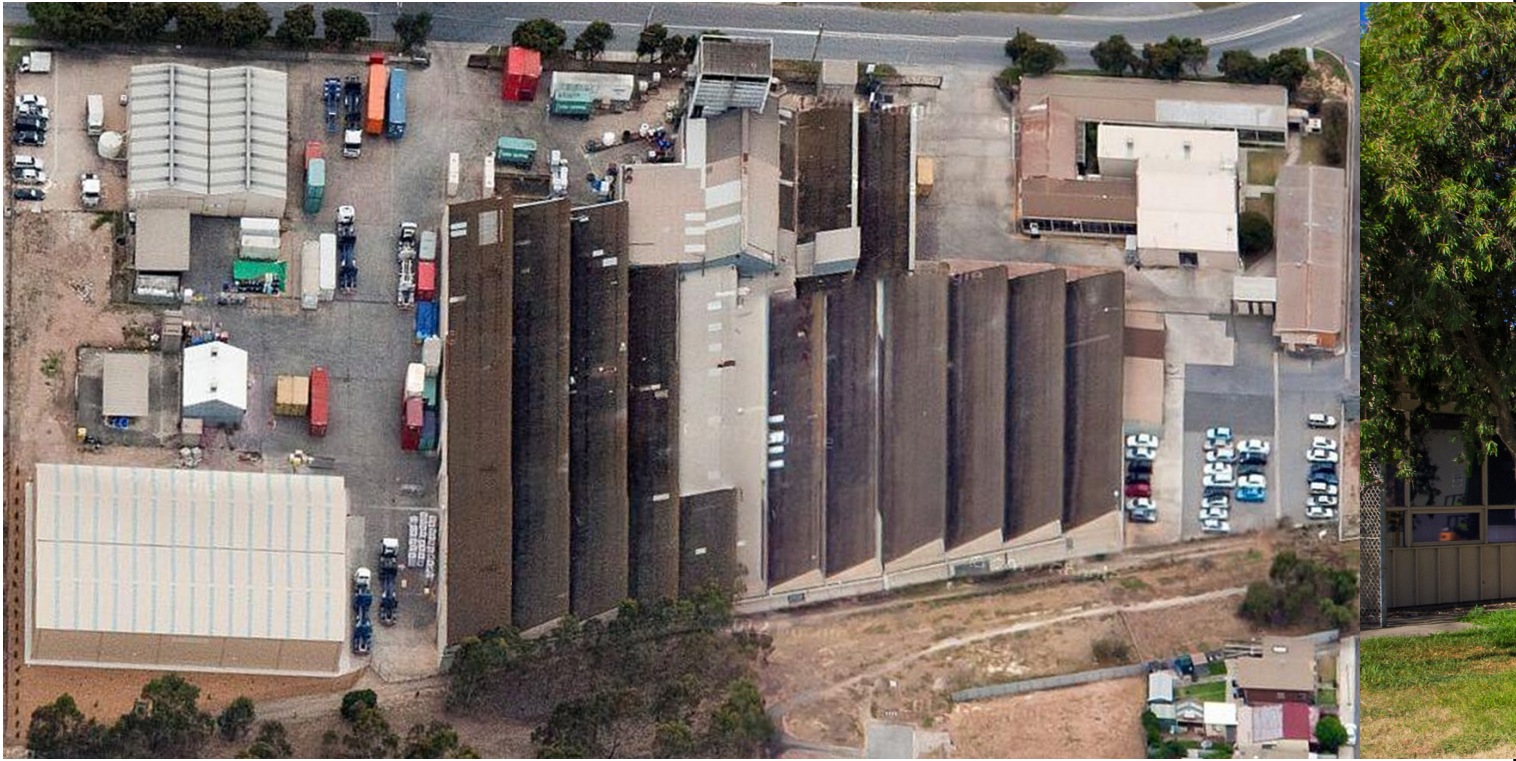
### We guarantee our product quality with Certificates of Analysis

Chem-Supply provides certificates of analysis for all its products upon request. Simply contact your distributor for a copy or request it with your next order.



# Facilities

7



Chem-Supply's seven acre administration, storage and manufacturing site is located near Port Adelaide in South Australia. The site is centrally located in Australia and acts as Chem-Supply's central distribution hub, servicing its nation-wide customer base.







The site features extensive filling, repackaging and blending facilities for dry and liquid goods across a broad range of chemical classes, an administration building, ample storage including 250,000 litres flammable goods storage and refrigerated storage, a QC laboratory and a new finished goods store.



# Specialty Division

9

## Specialty Division Sales & Leadership Team

Business Manager

Business Development  
Managers

Industry Manager

Agriculture  
Crop Care  
Stockfeed  
Coatings  
Industrial

Industry Manager

Consumer Care  
Home Care  
Pharmaceutical  
Plastics & Additives

Industry Manager

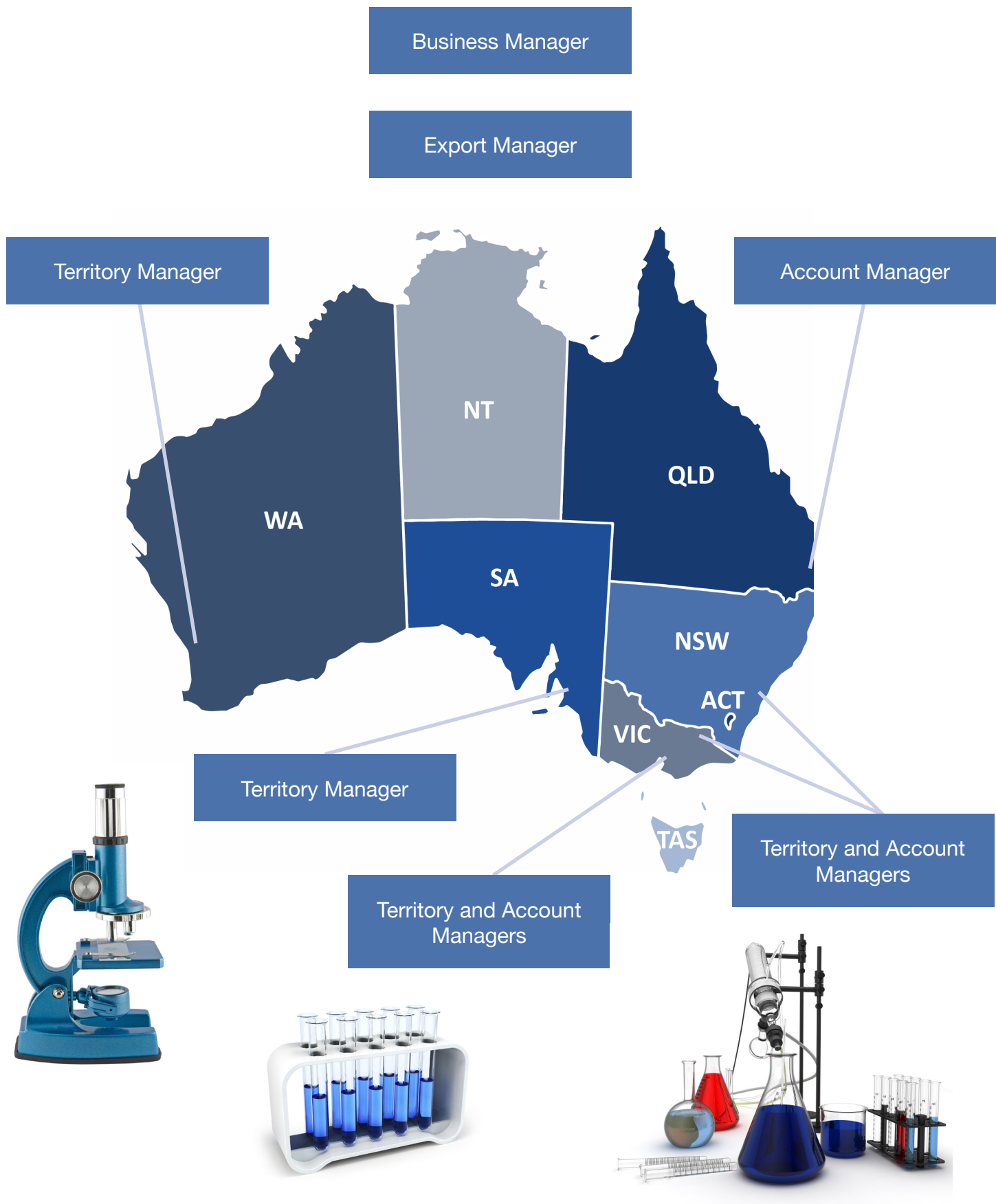
Defence  
Mining  
Food & Beverage  
Wine  
Medical  
Professional Diving





# Laboratory Division

## Laboratory Division Sales & Leadership Team



## Food & Beverage

- Acidulants
- Antifoams
- Colours – Natural & Synthetic
- Emulsifiers
- Flavours – Natural & Synthetic
- Hygiene Cleaning Products
- Hygiene Monitoring Products
- Preservatives & Stabilisers
- Wine Additives & Processing Aids

## Consumer Care

- Anionic, Cationic, Nonionic Surfactants
- Colours for Hair & Skin Care
- Emollient Esters
- Essential Oils & Herbal Extracts
- Lanolin & Derivatives
- Protein Derivatives
- Rheology Modifiers
- Solubilisers
- Solvents

## Agriculture & Animal Health

- Acids
- Adjuvants & Emulsifiers
- Flavours & Minerals
- Sanitisers
- Soluble Fertilisers
- Trace Elements – Granular & Soluble

## Industrial Products

- Acids
- Antifoams
- Oxidation Agents
- Sanitisers
- Solvents
- Surfactants



## Market Segments

Analytical Testing

Hospital & Medical

Biotechnology

Industrial

Education

Pharmaceutical &  
Biopharmaceutical

Environmental Testing

University & Research

Food & Beverage



## Product Types

- Analytical Solvents
- Dry Chemicals
- High Purity Acids
- High Purity Solvents
- Indicator & pH Strips
- Ionic Liquids

- Laboratory Solutions
- Microbiological Media
- Organic Reagents
- Reference Standards
- Silica Gels
- Specialised Chemicals

**Honeywell**

Burdick & Jackson®



**TECHNICO FLOF**

PARIS - MIAMI - GUANGZHOU - DUBAI - SINGAPORE



**molecular**



Mitsubishi Engineering-Plastics Corporation



**RCI Labscan**

RCI Labscan Limited



**TOKYO CHEMICAL INDUSTRY CO., LTD.**  
Moving Your Chemistry Forward



CRODA

eka

# Orders & Enquiries

Australia-wide Customer Service

**P**

08 8440 2000

**F**

08 8440 2001

**E**

sales@chemsupply.  
com.au

or visit [www.chemsupply.com.au](http://www.chemsupply.com.au)

## Head Office

38-50 Bedford Street, Gillman, SA, 5013

PO Box 201, Port Adelaide, SA, 5015

