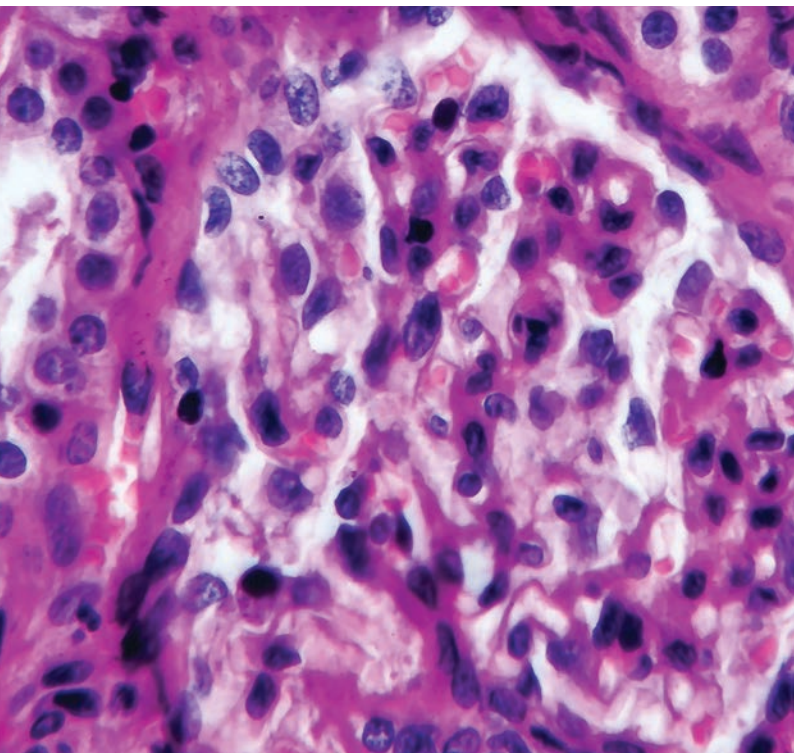




**CSA**Pathology

Experience.  
Better Results.





Laboratories large and small trust CSA Pathology brands for the reliable supply of pathology stains, fixatives, reagents, buffers and ancillary products.

### Protecting and nurturing our quality brands

With science at the heart of our business, at ChemSupply Australia we're protecting, nurturing and growing our trusted brands **Australian Biostain**, **Kinetik** and **Amber Scientific** under the banner of our business unit **CSA Pathology**.

Our skilled scientists and technical specialists are proud to be the active custodians of these highly respected brand's collective knowledge, ingenuity and expertise, and in turn, are helping to secure the future of routine pathology in Australia.

These brands cover the full gamut of routine pathology requirements in histology, haematology, cytology and microbiology. A combination of inherited and developed expertise allows us to create standard and customised products, many of which are based on our own proprietary formulations.

Today, CSA Pathology's success is built on decades of proven innovation and expertise, with each of our brands offering unique technologies and products that play an essential role in the provision of reliable pathology services across the country.







**CSA Pathology**

Our brands combine the best in manufacturing, development and quality assurance to deliver confidence, innovation, value and capacity to Australia's growing pathology sector.

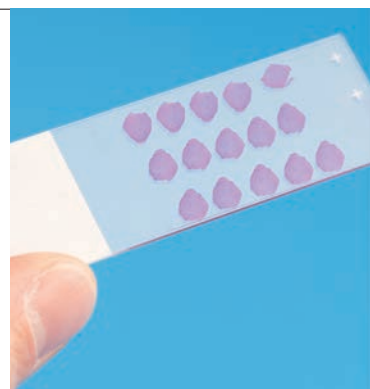
## Our three dynamic brands

### Investing in the future of pathology



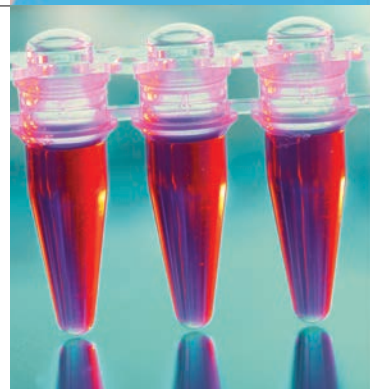
Our flagship brand, Australian Biostain has an enviable reputation for the quality of its customised and standardised stains, buffers, reagents, fixatives and ancillary products.

The brand has become synonymous with reliable H&E stains – using carefully formulated hematoxylin – and its robust, industry-leading neutral buffered formalin.



The widely-respected Kinetik brand leads the way in the manufacture of biomedical stains and solutions for diagnostic applications in pathology and research.

Kinetik has mastered the manufacture of the highly complex Wright's Giemsa stain, which is perfectly complemented by our specially formulated Sorensen's buffer.



Amber Scientific is the go-to brand for components essential in delivering reliable diagnostics, helping busy laboratories across a wide range of haematology, histology and microbiology diagnoses.

Many of its products are regarded as the 'workhorses' of the pathology laboratory, providing reliability, consistency and value for money.



a **CSA** Pathology brand

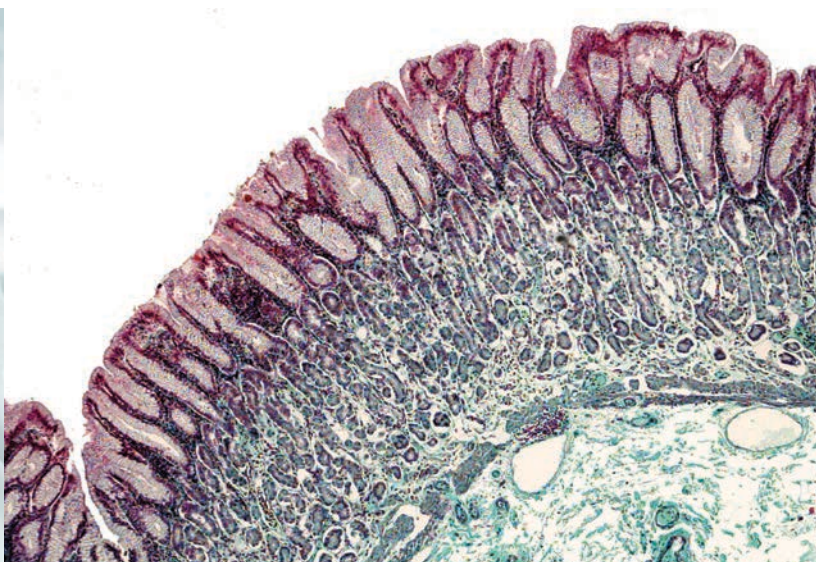


For more than thirty years, Australian Biostain has forged an enviable reputation for the quality of our customised and standardised stains, buffers, reagents, fixatives and ancillary products.

### A trusted brand

As one of the most trusted brands in our field, Australian Biostain offers a range of Class-2 IVD registered and ISO 13485 certified products, specially designed to add efficiency, dependability and consistency to laboratories – particularly those that are relying more and more on automation.

Through pioneering efforts and exacting standards, Australian Biostain has become synonymous in Australia with high-quality hematoxylin and eosin stain (H&E stain), and stable, long-lasting, ready-to-use neutral buffered formalin.



Our trusted brands sit at the very heart of CSA Pathology, where our skilled scientists and technical specialists are proud to be the active custodians of their collective knowledge, ingenuity and expertise, and in turn, help secure the future of routine pathology in Australia.

## Australian Biostain products

Our range includes stains, dyes, solvents, buffers, reagents, fixatives and ancillary products.

The following are a range of featured products.

### H&E stain

Our H&E stain is crafted with the same care and attention to detail that a winemaker instils in their finest vintage – and the analogy is no coincidence. Hematoxylin is sourced from selected logwood trees and, being a natural product just like wine grapes, is subject to the whims of weather, soil conditions and harvest. Like master vignerons however, our scientists are experts at extracting the ideal characteristics from every batch to ensure consistency and quality. We even 'age' it, so it reaches our customers in optimal condition.

### Neutral buffered formalin

Australian Biostain's proprietary neutral buffered formalin is carefully crafted to meet even the most demanding of needs.

Fully optimised and pH controlled, it is manufactured to provide the best in tissue preservation, morphology and antigen integrity. We achieve this by first importing only top-quality formalin containing the optimal level of preservative to minimise the precipitation of unwanted paraformaldehyde. A proprietary buffering formula – the exact details of which are known only to a handful of the CSA Pathology team – is then added to stabilise the formalin and standardise the pH.

This painstaking process creates a robust, dependable fixative that performs superbly in Australian conditions and boasts a nominated shelf-life of five years.

### Confix™

To complement our NBF, a x5 concentrate – Confix™ has been perfected specially for laboratories with limited space, featuring coloured dyes to indicate pH and guarantee performance.

### Histopot™

In 1999, the Histopot™ was born, adding to our ever-growing product range. Today, these pre-filled biopsy jars have become a staple item in histology departments across the country. Histopots are available in 25, 70 and 250mL sizes and shrink-wrapped into pocketed trays to ensure they arrive in the very best condition.

## Staining solutions and kits

Thanks to our Class-2 IVD registration, we are authorised to manufacture staining solutions for specific purposes – either individually or as a kit – including Gram's, Kleihauer, Ziehl-Neelsen and B5 Fixative, as well as an array of highly specialised kits, all produced locally to ensure quality, supply and convenience.

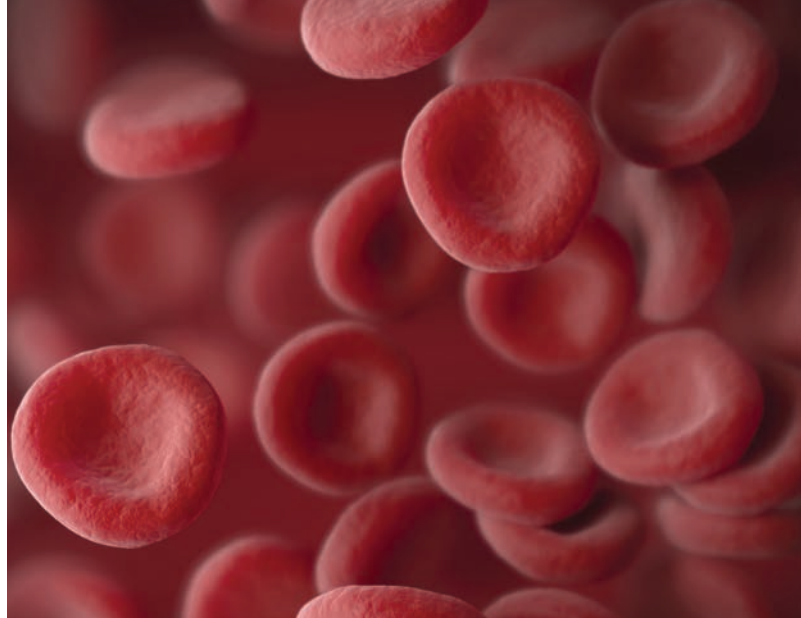
Across the entire Australian Biostain range, we are committed to providing safer, easy-to-use, consistent and cost-effective solutions that provide confidence and peace-of-mind to pathology specialists, technicians and, importantly, health professionals and their patients.

### Safety Data Sheets

Visit [AustralianBiostain.com.au](https://www.AustralianBiostain.com.au) to access our online library of safety data sheets available for download.



a **CSA** Pathology brand



For three decades, Kinetik has led the way in the manufacture of biomedical stains and solutions for diagnostic applications in pathology and research.

### Premium components

With a focus on in vitro diagnostics – particularly in haematology and cytology – Kinetik's outstanding track-record has been built on the perfect harmony of two premium components: **Wright's Giemsa stain** and **Sorensen's buffer**. Both are the pre-eminent products in their field, and together, they make the ideal pairing.

Our coveted Wright's Giemsa stain is a particularly finicky stain to make, however our specialists have perfected the art of creating a uniform and reliable product. This is thanks to years of meticulous research and endless fine-tuning, resulting in the ideal combination of formulation and method.



### Specialty stains

Produced in Queensland, the Kinetik range of products also covers a selection of high-quality, ready-to-use specialty stains – made either to standard formulations or to meet customers' precise requirements.

Kinetik stains are supplied in a variety of container sizes to suit individual laboratory requirements and, where applicable, may also be supplied in cost-effective, concentrated form.

### Safety Data Sheets

Visit [Kinetik.net.au](https://www.kinetik.net.au) to access our online library of safety data sheets available for download.



a **CSA** Pathology brand



Amber Scientific is an essential brand in helping busy laboratories deliver reliable results across a wide range of diagnoses.

### A mainstay of Australian pathology

Amber Scientific has a reputation for helping busy laboratories across a wide range of haematology, histology and microbiology diagnoses.

We've been a mainstay of the Australian pathology industry for over thirty years, thanks to our range of convenient, dependable, cost-effective reagents supplied in-solution, ready for use in automated instrumentation and diagnostic procedures.



### Reliability and value for money

Our high-performance solutions – including that 'workhorse' of Australian pathology: **phosphate buffered saline** – are regarded throughout the sector for their reliability and value for money

This reputation has not been achieved through chance. The team behind the Amber Scientific range are custodians of decades of experience and proprietary knowledge into how to achieve the very best results.

Our team understands that crafting a quality reagent is more than simply adding a list of ingredients to a solvent base. Instead, they focus on the importance of order, method, speed, temperature and process, in delivering consistency, reproducibility, performance and shelf-life.

Amber reagents offer intelligent, reliable solutions to meet the demands of modern pathology and diagnostics.

### Safety Data Sheets

Visit [AmberScientific.com.au](https://www.AmberScientific.com.au) to access our online library of safety data sheets available for download.





# CSA Pathology

a **ChemSupply**Australia business unit

**AUSTRALIAN BIOSTAIN & AMBER SCIENTIFIC**

24-28 Stratton Drive, Traralgon, Victoria 3844

**KINETIK**

Unit 10 / 12 Robart Court,  
Narangba, Queensland 4504

[csapathology.com.au](http://csapathology.com.au)



**ChemSupply**Australia

With science at the heart of our business, our aim is for our chemistry to deliver better results — for our customers, for our partners, and for our world — through the consistency of our products, and through the quality of our service.

Experience. Our Chemistry.